

Catch up

with the outer suburbs

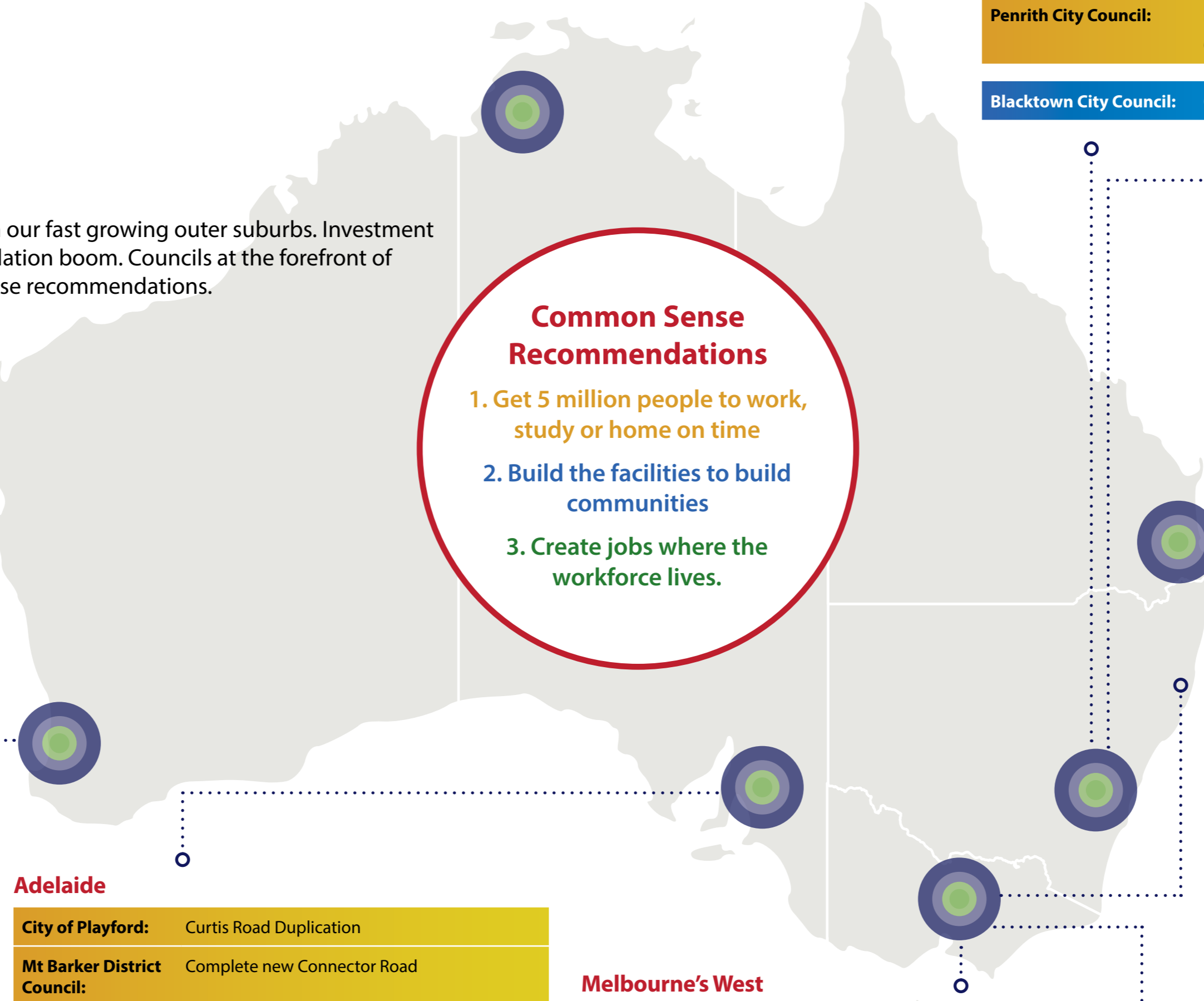
Catch up with the energy, enthusiasm and potential in our fast growing outer suburbs. Investment in vital infrastructure has not kept pace with our population boom. Councils at the forefront of Australia's population growth have three common sense recommendations.

Common Sense Recommendations

1. Get 5 million people to work, study or home on time
2. Build the facilities to build communities
3. Create jobs where the workforce lives.

Perth

City of Gosnells:	Gosnells grade separation
City of Wanneroo:	Neerabup Strategic Link – Flynn Drive duplication
City of Armadale:	Armadale Higher Education Centre
City of Armadale:	Armadale Regional Recreational Reserve
City of Cockburn:	Dixon Reserve
City of Gosnells:	Sutherlands Park
Shire of Serpentine-Jarrahdale:	Keirnan Park Recreation Precinct
City of Swan:	Ellenbrook Indoor Leisure Centre Swan Community Workshops
City of Wanneroo:	Alkimos Regional Open Spaces Butler North District Open Space Kingsway Regional Sporting Complex Regional Northern Coastal Swimming Pool



Adelaide

City of Playford:	Curtis Road Duplication
Mt Barker District Council:	Complete new Connector Road
City of Playford:	Lyell McEwin Health Precinct
Mt Barker District Council:	Recycled Water Initiatives Mt Barker Innovation and Gig City Hub Hahndorf Main Street Upgrade

Melbourne's West

Melton City Council:	Western Highway Upgrade
Wyndham City:	Connect Werribee and Geelong by rail Rail projects - improve the Regional Rail Link line to Wyndham Vale, add capacity on the Werribee line and improve commuter parking at train stations New and expanded bus services
Wyndham City:	Wyndham Freight Infrastructure Investment Plan
Melton City Council:	Cobblebank Indoor Sports Stadium

Sydney's West

Western Sydney Councils:	Plan and fund for entire North South Rail line
Penrith City Council:	Mulgoa Road Castlereagh Connection
Blacktown City Council:	Community facilities

South West Sydney

Camden Council, Campbelltown City Council, Wollondilly Shire Council:	Consolidated regional transport network including the Greater Macarthur Region, Western Sydney Airport and Outer Sydney Orbital
Wollondilly Shire Council:	Electrified Rail
Campbelltown City Council:	Campbelltown Collaboration Hub
Wollondilly Shire Council:	Planning and Investment in Agribusiness and Tourism Jobs
Wollondilly Shire Council:	Health and Education facilities
Liverpool City Council:	River Connections, improving connection, presentation and arrival experience

Melbourne's North

Hume City Council:	Duplicate Mickleham, Somerton and Sunbury Roads
City of Whittlesea:	Bring forward the delivery of the E6 Freeway Wollert Transport Corridor Study
City of Whittlesea:	Mernda Health and Wellbeing Hub
Hume City Council:	Hume Community Infrastructure projects
City of Whittlesea:	Mernda aquatic and recreation centre

South East Melbourne

Cardinia Shire Council:	Princes Highway intersection upgrades
Cardinia Shire and City of Casey:	Thompsons Road extension
City of Casey:	Southern Dandenong Bypass Extension Glasscocks Road Extension Clyde Rail Extension
Cardinia Shire and City of Casey:	South East Airport
City of Casey:	Berwick Health and Education Precinct
City of Casey:	Regional Soccer Centre of Excellence



Australia's population is booming and so are its outer suburbs.

More than a third of our population growth from 2011-2016 occurred in the outer suburbs, where National Growth Areas Alliance councils are located. The rate of population growth in the outer suburbs is faster than any government planned or expected.

Every year, around 136,000 people move to new suburbs on the outskirts of our capital cities. And while families, houses, neighbourhoods, communities and local businesses are being built, vital supporting infrastructure is not.

Planning for Australia's future population growth is important. But so is delivering infrastructure and services for the five million people who are already here as part of the population boom.

Infrastructure has the capacity to transform our economies and communities. It is time for governments to Catch Up with the outer suburbs, and match the vitality and pace of growth in new communities.



An Alliance of Councils from across Australia's growing outer suburbs, we are united by our shared vision of growing communities that are resilient, liveable and productive places.

Alliance Members have first-hand knowledge of the impact of population growth rates at double the national average, inadequate infrastructure to cope with the increased demand, and long-term lack of government investment in roads, public transport and essential services.

www.NGAA.org.au



What do we mean by 'outer suburbs'?

Probably not what you're thinking. Places you may consider 'country towns' are these days operating as outer suburbs. They are located beyond established transport routes, and they need more jobs, services, schools and hospitals than the local area is providing.

It's 84 kilometres from the Sydney GPO to the new suburb of Wilton in the Shire of Wollondilly.

65km from Melbourne GPO to new estates on the edge of Pakenham in Cardinia Shire Councils.

In Perth's north, the major growth area of Yanchep is 55 kilometres from the city.

The town of Gawler in Adelaide's north, once a country town is now an outer suburb, 50 kilometres from the CBD.

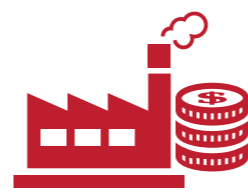
Brassall, on the outskirts of Ipswich in south east Queensland now functions as an outer suburb area of Brisbane, nearly 50 kilometres away.

Infrastructure Deficit



Received 13% of Federal infrastructure spend but 35% of population growth (2011-16)

Businesses Grew by 7.4% (2014-16)



More than double national rate (Australia had 3.4)

Local Jobs 1.52m



12.8% of Australia's employment in 2016. Up from 9.6% in 2006.

Economy (GRP) \$186.8b



11.3% of Australia's GDP in 2016. Up from 10.3% in 2006

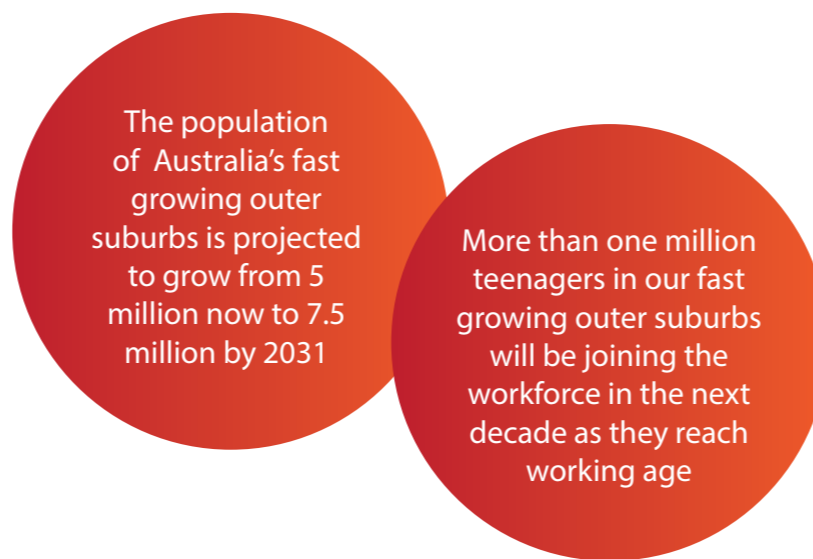
Skill Gap



13% bachelor degree (national avg is 19%)

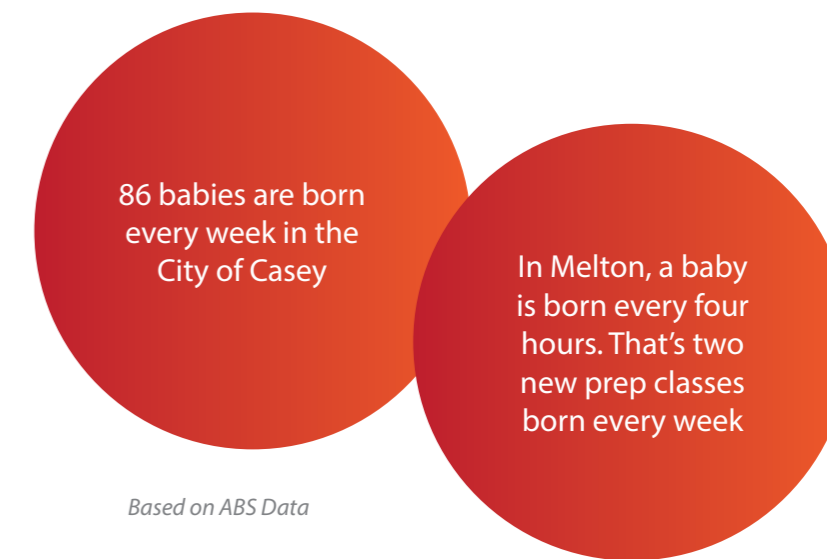
Population boom

Over the next fifteen years or less, Australia is projected to grow by another 5 million people. That's like adding another city the size of Canberra every year for the next decade and more. Most of this growth will continue to be on the outskirts of our capital cities.



Catch Up with the outer suburbs baby boom

Fast growing outer suburbs have the highest birth rates in Australia. Victoria has the fastest increase in birth rates, with Cardinia, Casey, Hume, Melton, Mitchell, Whittlesea and Wyndham estimated to see an 86% rise in children aged from newborn to nine, compared to a 25% increase for the rest of Melbourne.

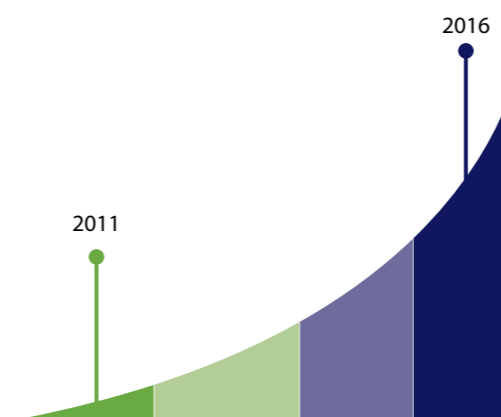


Population size (2016)



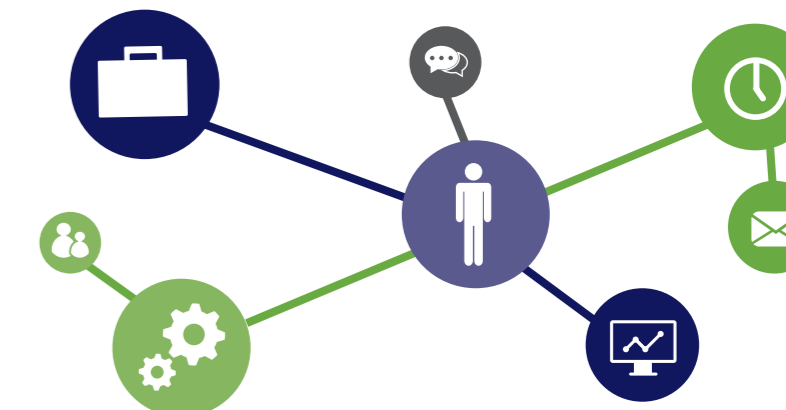
4.6 million
1 in 5 Australian's called the fast growing outer suburbs home

Population growth (2011-16)



3.0%
Almost double the annual average growth rate of Australia (1.6%)

Workforce



2.21 million
18.7% of Australia's workforce. Up from 14% in 2006