



Suburban Utopia?

National Growth Areas Alliance Summit

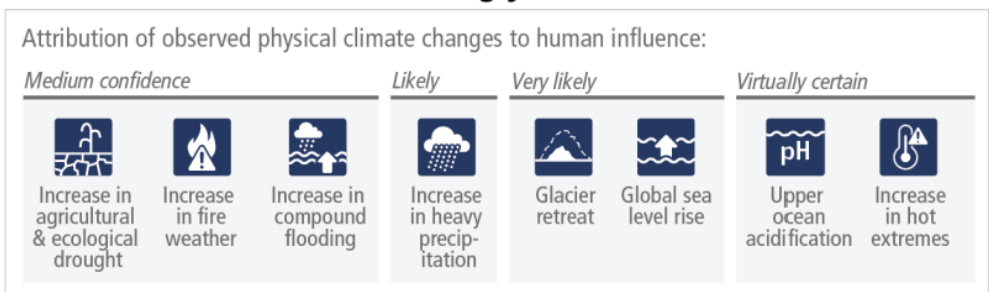
4 May 2023

St Jack & Co
CLIMATE CONSULTANTS

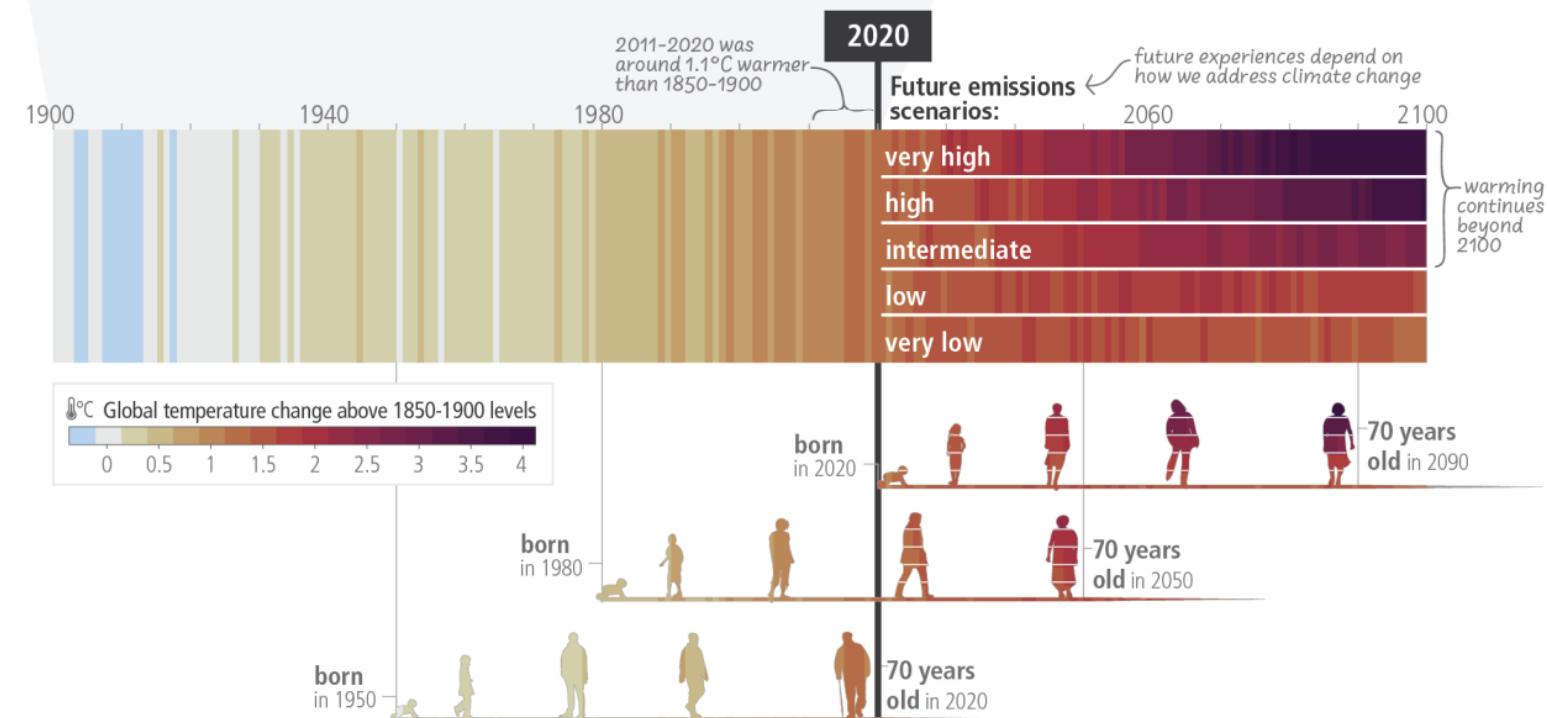


Working together to accelerate climate action

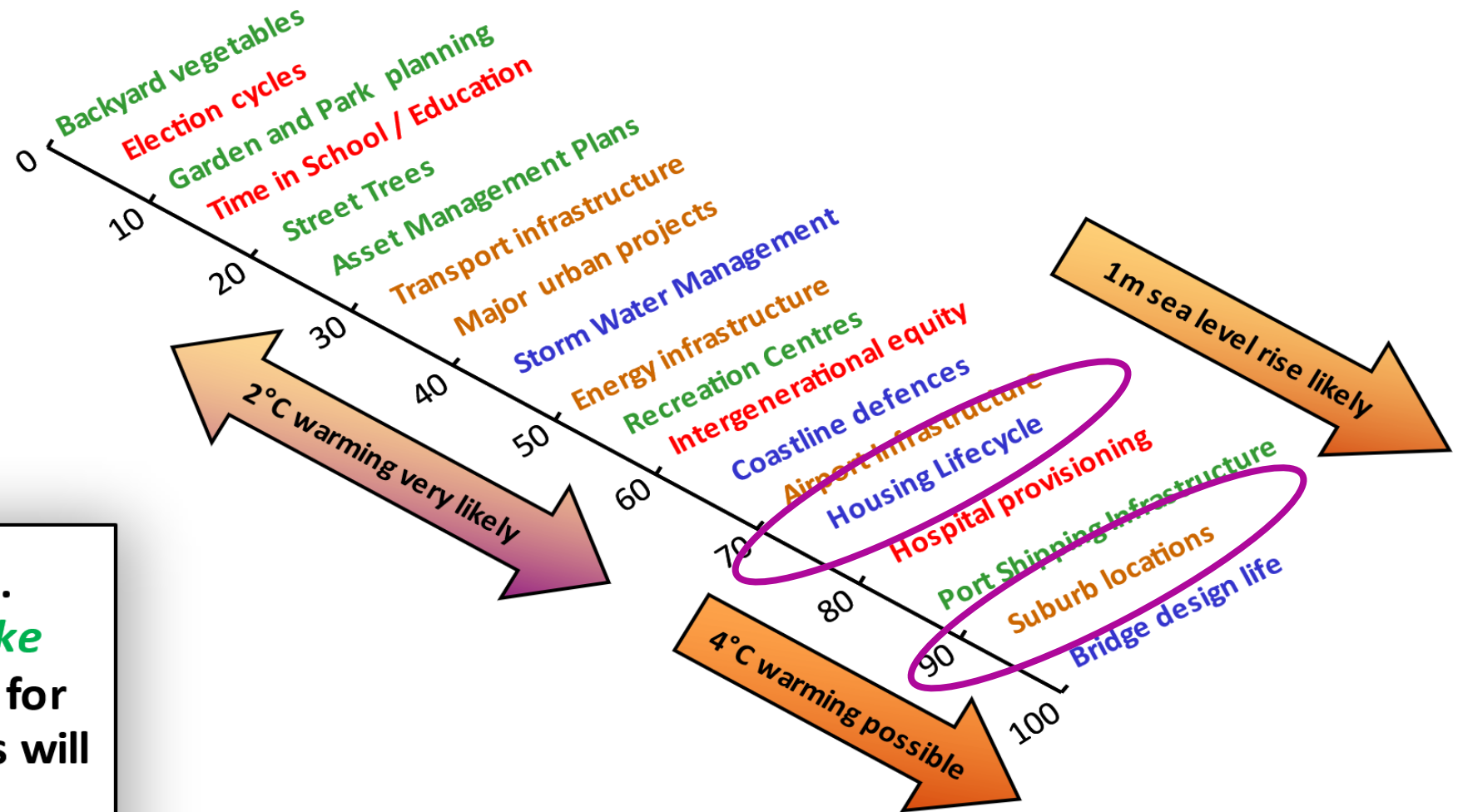
b) Impacts are driven by changes in multiple physical climate conditions, which are increasingly attributed to human influence



c) The extent to which current and future generations will experience a hotter and different world depends on choices now and in the near-term



DECISION LIFETIMES...
the *decisions YOU make*
today **MUST** account for
how long their effects will
be felt...



Councils have a duty of care to manage risks

Climate risks
impact Council
business, eg.

- Assets increasingly at risk of damage
- Ability to deliver services diminished
- Additional service demand and clean-up costs in disasters

Not managing
risks may...

- Harm your community
- Open Council to litigation risks








\$46+M value by
retrofitting
climate ready in
Mount Barker





78%
cheaper
to run



7.6 stars
Net Zero



66%
energy
saving

SA Councils influencing better housing?

DIRECT

Improving Council policy and practice

- Internal review committees
- Clear guidance on planning policy interpretation
- Planner training / capability raising

Intervening in the market

- Selling Council or state-owned land with encumbrances
- Financial incentives like rate rebates and subsidies
- Expedited DA for sustainable proposals
- Partnerships with developers, volume home builders, green finance providers etc.

INDIRECT

Advocating for policy change

- Planning & Design Code
- Regional Plan
- National Construction Code

Educating consumers

- Exemplar display homes
- Resources
- Forums
- Campaigns





TREE
EQUITY
SCORE

NATIONAL
EXPLORER

Search for your town



Dearborn

Municipal report →

MI Congressional District 12

Census Block Group 261635736001

51

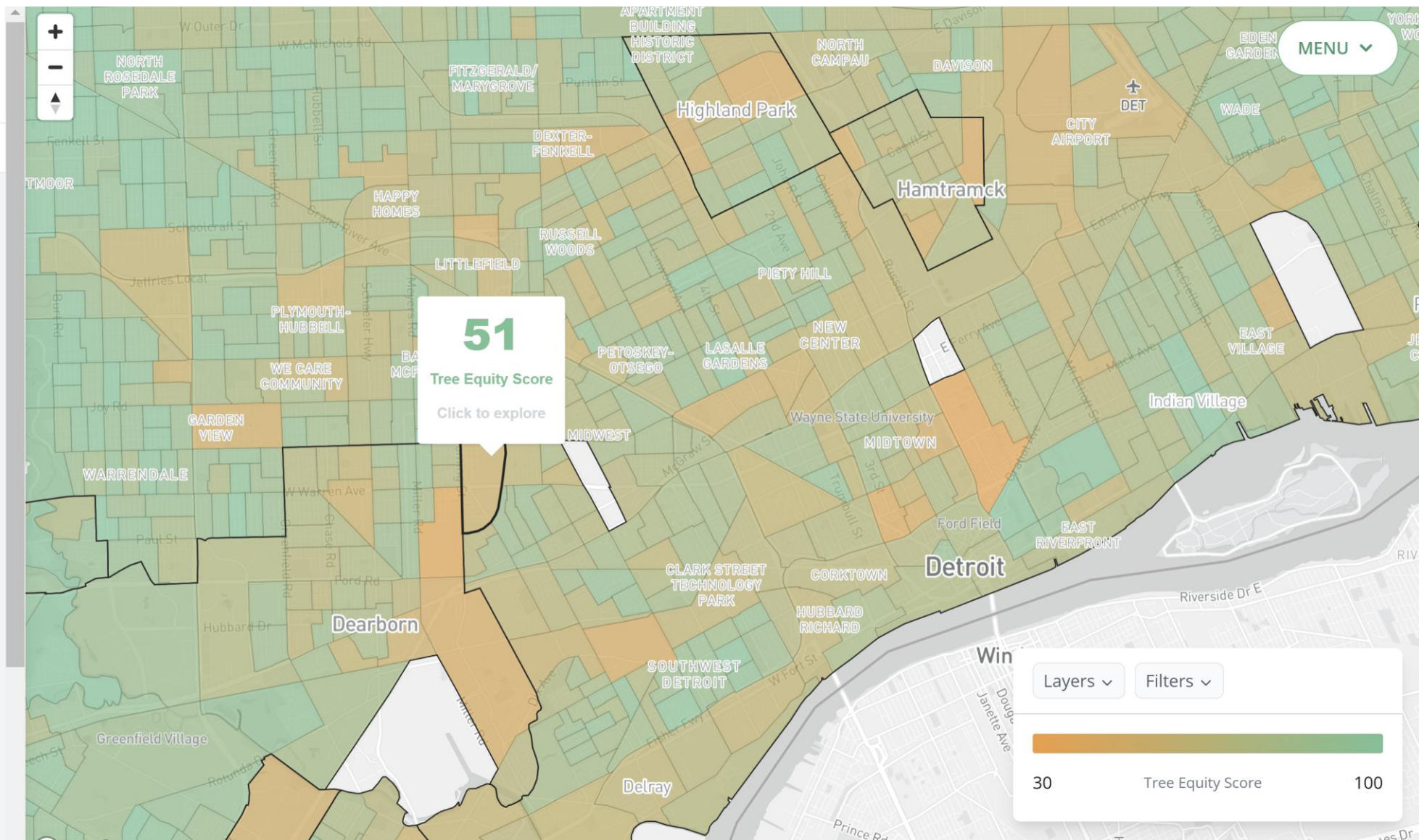
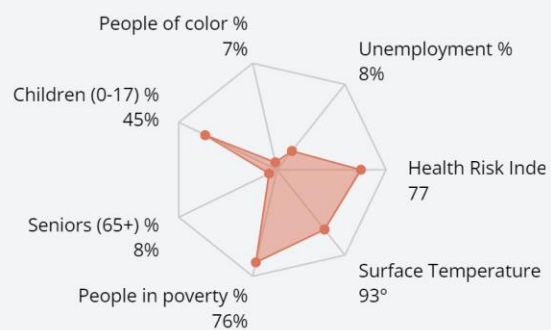
Tree Equity Score

RANK

85th of 89 blockgroups in
Dearborn

Score indicators

Priority index



THE OPPORTUNITY



Affordable, comfortable
and healthy living



Lower power bills
(heating, cooling etc)



Lower insurance
premiums



Lower
finance costs



More resilient community



Reduce environmental
and carbon footprint



Positions the district as
a desirable area



Align with Council's
reputation and green values

